

How to get a Meter Read on your Sharp Copier

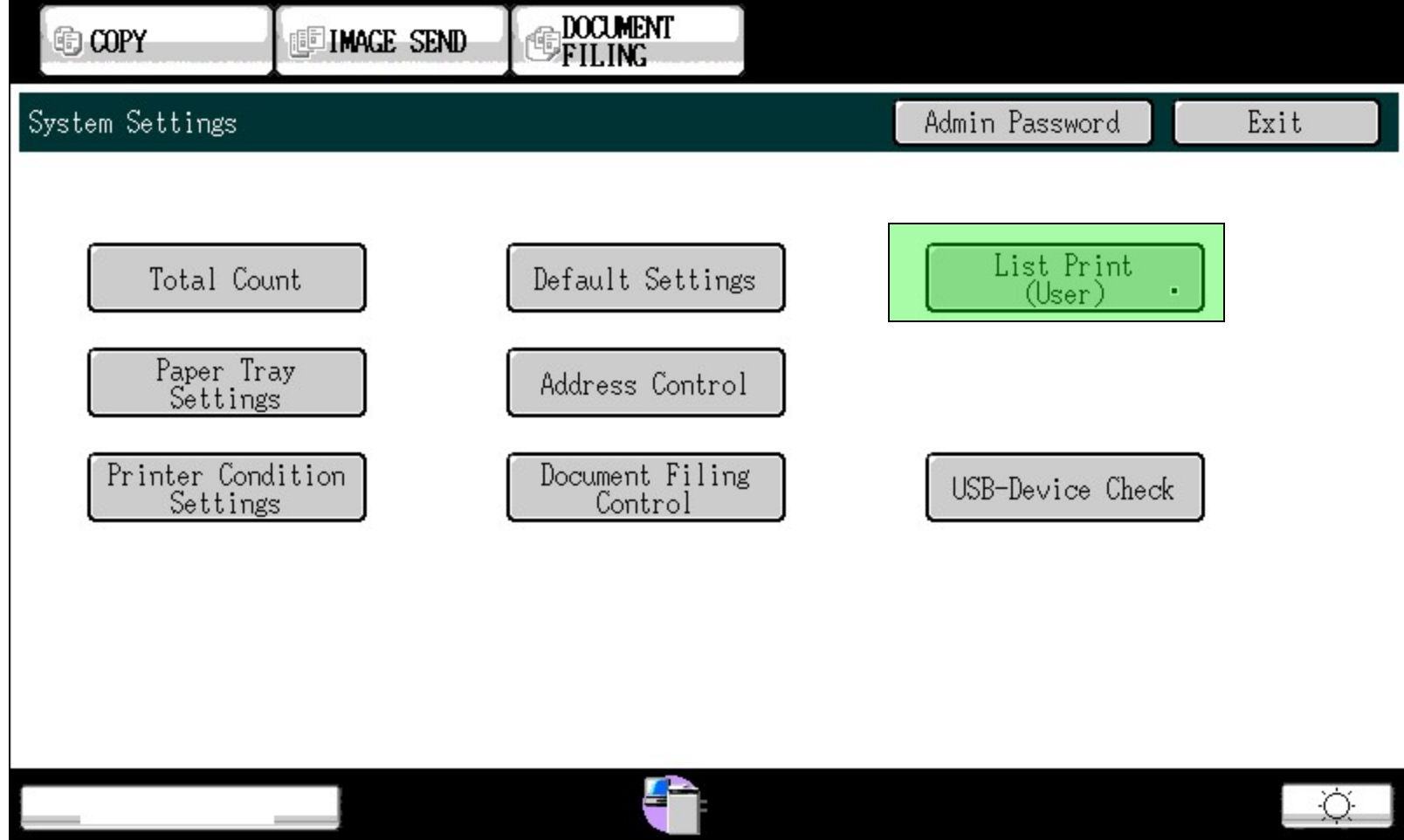




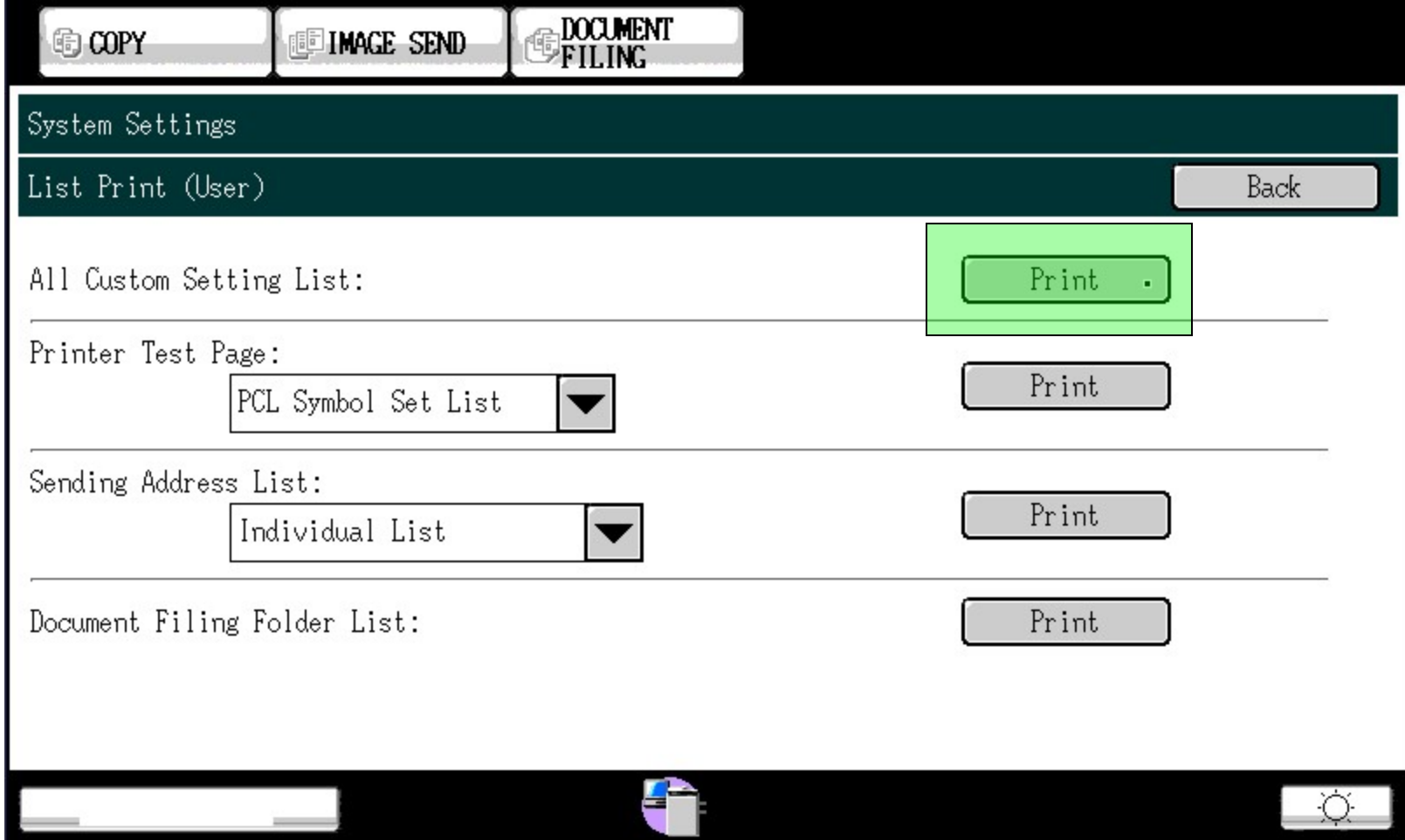
The easiest way to find the meter is to press and hold the copy button on the touch screen (or physical copy button) while in copy mode. This button is highlighted in the example above. The "Total Count" section shows the counts for both black and white and color. The "Toner Quantity" Section shows how much toner is remaining for each color before supplies need to be replaced. When you see 0-25% remaining. Please call ROTC and order a new toner for that color.



You can also print out a report with the meter on it to keep for your records or to send to ROTC. Press the system settings button to the right of the touch screen. In my example, my system settings button is below my touch screen and highlighted above. The button may also look like a gear as seen on right.



In the “System Settings” screen, press the “List Print (User)” Button. I have this button highlighted above.



In this screen, look for “All Custom Setting List” and press the “Print” button. This button is highlighted in the example above. A report will print out of the machine.

HARDWARE STATUS

Machine Information

Resolution: 600dpi
Language: American English

Color Calibration

Last Method: Auto Color Calibration
Date & Time: 09/15/2014 11:28:39 PM

Copier Memory

Base Memory: 2048MB
Optional Memory: 0MB
Total Memory: 2048MB

Firmware Version

ICU(MAIN): 06.01.G2
ICU(BOOT): 01.00.G2
ICU(SUB): 01.04.G2
PCL(MAIN): 06.00.G2
PCU: 04.02.G2
SCU: 01.00.G2

Printer Memory

Base Memory: 1024MB
Optional Memory: 0MB
Total Memory: 1024MB

Installed Device

Paper Feeding Options: Stand/500 Sheet Paper Drawer
Paper Exit Options: Not Installed
Extended Font: Not Installed

HDD

320GB

Total Count

Color: 9
B/W: 487

SOFTWARE STATUS

Network Information

NIC Firmware Version: 01.05.00
IPv4 Address: 192.168.1.57
Subnet Mask: 255.255.255.0
Default Gateway: 192.168.1.1
Device Name: SCA65A51
Domain Name: Sharp-Printer
TCP/IP: Enable
DHCP: Disable
NetWare: Disable
EtherTalk: Disable
NBT/WINS: Disable
IPv6: Disable
IPsec: Disable

PCL Emulation

Font Source: Internal Font
Font Number: 0
Pitch: Courier
Pitch Size: 10.00
Point Size: 12.00
Symbol Set: PC-8

Total Count

Color:

9

B/W:

487

A report will print out will look similar to the example shown here. This report shows the model number, serial number and the meter readings for the black and white and color counts. Look the for the section that says "Total Count" I have this section highlighted and zoomed in below.

Congratulations! You have successfully printed out a meter read!